

PANTUM

# PANTUM EFFICIENT OFFICE/ MAX SERIES

---

## MONOCHROME LASER PRINTER

M7300/M7310/M7200/M6800/M7100/M6700  
/P3300/P3010 Series





Pantum Efficient Office/Max series printers are the best choice for SMB and SME. Empower your productivity with high efficiency output, variety connection methods and lower print costs.



Business-Grade Efficiency



Swift and Effortless Operation



Resource-Saving Design



Green Commitment

# BUSINESS- GRADE EFFICIENCY

---



## High-Speed and Reliable Printing

Offers 30ppm & 33ppm auto-duplex options, built with sturdy metal frames for durability and stability. Supports high-volume monthly printing with minimal jams and quiet operation.

## Fast Duplex Document Scanning

The M7310 series comes with a 50-page duplex automatic document feeder, allowing for quick and efficient duplex scanning of multiple documents in a single pass.



## Direct Scan-to-USB Functionality

Quickly scan and save your documents directly to a USB flash drive, providing a convenient and time-saving solution.

\* Supported by multifunction models with ADF.

## Secure and Intuitive 3.5-Inch Touch Screen

The M7310 series equipped with a 3.5-inch touch screen to simplify the operation process and easy for you to enter the password to release the print jobs.



# SWIFT AND EFFORTLESS OPERATION



## Instant Driver Setup in One Click

Eliminate setup headaches with a straightforward, one-click driver installation process, getting you ready to print in no time.



## Print on the go with mobile solutions

Print from anywhere with support for AirPrint, Mopria, and the Pantum app, making it effortless to print from smartphones and tablets.

\* Apple, AirPrint Mac and macOS are trademarks of Apple Inc., registered in the U.S and other countries. Use of the Works with Apple badge means that an accessory has been designed to work specifically with the technology identified in the badge and has been certified by the developer to meet Apple performance standards.

\* Mopria makes it easier to print and scan from your Android and Windows. For Android, Mopria™ Print Service and Mopria Scan are available for installation in the Google Play™ store. If you want to get more information, please visit <https://www.mopria.org>

The Mopria™ wordmark and the Mopria™ Logo are registered and/or unregistered trademarks of Mopria Alliance, Inc. in the United States and other countries. Unauthorized use is strictly prohibited.



## Dust-Protected 250-Page Paper Tray

Protect paper from Dust with an enclosed one-handed, easy-open paper tray with a 250-page capacity.

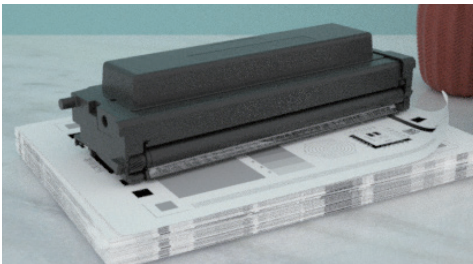
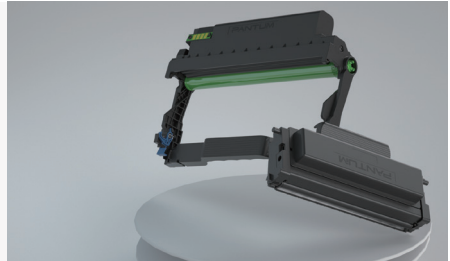
# RESOURCE-SAVING DESIGN

---



## Cost-Effective Toner and Drum Separation

Users can continue to print by simply replacing the toner cartridge, saving the cost of drum unit replacement and realizing lower cost with high-capacity toner cartridges.



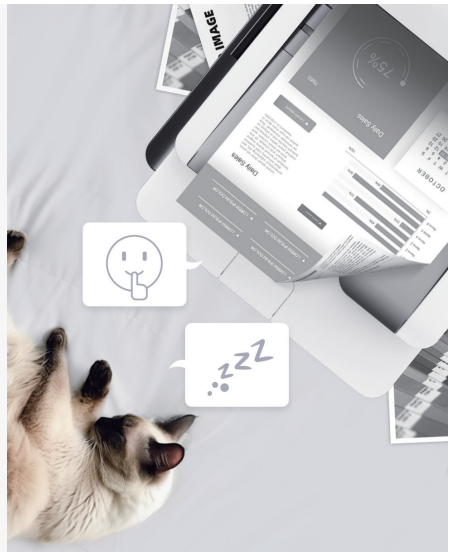
## Economy Toner-Saving Mode for Savings

Optimize your budget with a toner-saving mode that reduces toner usage, extending cartridge life and delivering lighter prints without sacrificing quality.



## Energy-Efficient Sleep Mode

Automatically enters sleep mode after a customizable period of inactivity, conserving energy and prolonging printer lifespan by powering down non-essential components.



# GREEN COMMITMENT



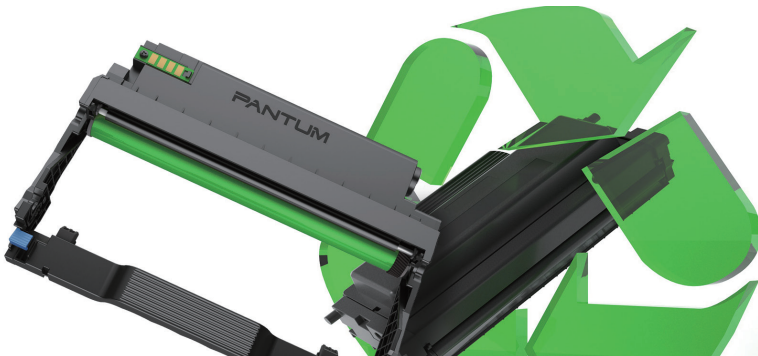
## Automatic Duplex Printing for Sustainability

Set all your print jobs to automatically print on both sides, reducing paper consumption and costs, and minimizing your environmental impact.



## Eco-Friendly Toner Cartridges

The energy saving mode provides significant power savings and a corresponding reduction in CO2 emissions, contributing to energy saving and emission reduction.



## Eco-Friendly Toner Cartridges

The Efficient Office/Max series uses premium, eco-conscious materials. Reduced powder usage and low-ozone emissions thanks to Pantum's contact roller charging system, creating a minimally impactful environmental footprint.

\*Pantum's contact roller charging system

# EFFICIENT SERIES

EFFICIENT OFFICE SERIES



Product	P3010D   P3010DW	P3300DN   P3300DW
<b>Print</b>		
Print speed	30ppm(A4)/32ppm(Letter)	33ppm(A4)/35ppm(Letter)
First print out time	≤7.8s	≤8.2s
Recommended monthly page volume	750 to 3,500 pages	750 to 3,500 pages
Max. monthly duty cycle	60,000 pages	60,000 pages
Printer language	GDI	PCL5e,PCL6,PS3,PDF
Processor speed	350 MHz	350 MHz
Memory	128 MB	256 MB
Control panel	LED   2-line LCD	2-line LCD
Auto duplex print	Yes	Yes
NFC function	No   Yes	No   Yes
<b>Copy</b>		
Copy speed	-	-
First copy out time	-	-
Max. copy pages	-	-
Copy reduce/enlarge settings	-	-
<b>Scan</b>		
Scanner type	-	-
ADF capacity	-	-
Scan speed	-	-
<b>Fax</b>		
Fax type	-	-
Modem speed	-	-
Fax memory	-	-
<b>Paper Handling</b>		
Paper input capacity	250 pages	250 pages
Multipurpose tray capacity	1 page	1 page
Optional input paper tray	-	-
<b>Others</b>		
Product dimensions (W*D*H)	354*334*218 mm   354*334*232mm	354*334*232mm
Product weight	6.8 kg	6.8 kg
Power consumption	Print average: 525W; Standby: 50W; Sleep: less than 2W	Print average: 525W; Standby: 50W; Sleep: less than 2W
Interface	High-Speed USB 2.0   High-Speed USB 2.0; Ethernet: IEEE 802.3 10/100 Base-Tx; Wi-Fi:IEEE 802.11b/g/n	High-Speed USB 2.0   High-Speed USB 2.0; Ethernet: IEEE 802.3 10/100 Base-Tx; Wi-Fi:IEEE 802.11b/g/n
<b>Supplies</b>		
Type	Separate	Separate
Starter consumable*	Cartridge: 1,000 pages Drum: 9,000 pages	Cartridge: 1,000 pages Drum: 9,000 pages
Standard consumable*	TL-410: 1,500 pages TL-410H: 3,000 pages TL-410X: 6,000 pages DL-410: 12,000 pages	TL-410: 1,500 pages TL-410H: 3,000 pages TL-410X: 6,000 pages DL-410: 12,000 pages

\*Approx declared yield value in accordance with ISO/IEC 19752

\*Drum unit yield value is based on 1 page per print job.

Individual users will experience different results affected by different printing habits and printing environment.



# EFFICIENT SERIES

EFFICIENT OFFICE SERIES

Product	M6700D   M6700DW	M6800FDW
<b>Print</b>		
Print speed	30ppm(A4)/32ppm(Letter)	30ppm(A4)/32ppm(Letter)
First print out time	≤7.8s	≤7.8s
Recommended monthly page volume	750 to 3,500 pages	750 to 3,500 pages
Max. monthly duty cycle	60,000 pages	60,000 pages
Printer language	GDI	GDI
Processor speed	525 MHz	600 MHz
Memory	128 MB	256 MB
Control panel	2-line LCD	2-line LCD
Auto duplex print	Yes	Yes
NFC function	NO   Yes	Yes
<b>Copy</b>		
Copy speed	30cpm(A4)/32cpm(Letter)	30cpm(A4)/32cpm(Letter)
First copy out time	Less than 10 s	Flatbed: less than 10s; ADF: less than 11s
Max. copy pages	99	99
Copy reduce/enlarge settings	25%~400%	25%~400%
<b>Scan</b>		
Scanner type	Flatbed	Flatbed+ADF
ADF capacity	-	50 pages
Scan speed	-	24ppm(A4)/25ppm(Letter)
<b>Fax</b>		
Fax type	-	Mono
Modem speed	-	33.6 Kbps
Fax memory	-	Up to 650 pages
<b>Paper Handling</b>		
Paper input capacity	250 pages	250 pages
Multipurpose tray capacity	1 page	1 page
Optional input paper tray	-	-
<b>Others</b>		
Product dimensions (W*D*H)	415*365*310 mm	415*365*350 mm
Product weight	10.26 kg	11.39 kg
Power consumption	Print average: 550W; Ready: less than 50W; Sleep: less than 2W	Print average: 550W; Ready: less than 50W; Sleep: less than 2W
Interface	High-Speed USB 2.0   High-Speed USB 2.0; Ethernet: IEEE 802.3 10/100 Base-Tx; Wi-Fi: IEEE 802.11b/g/n	Hi-Speed USB 2.0; Net: IEEE 802.3 10/100 Base-Tx; Wi-Fi: IEEE 802.11b/g/n
<b>Supplies</b>		
Type	Separate	Separate
Starter consumable*	Cartridge: 1,000 pages Drum: 9,000 pages	Cartridge: 1,000 pages Drum: 9,000 pages
Standard consumable*	TL-410: 1,500 pages TL-410H: 3,000 pages TL-410X: 6,000 pages DL-410: 12,000 pages	TL-410: 1,500 pages TL-410H: 3,000 pages TL-410X: 6,000 pages DL-410: 12,000 pages

\*Approx declared yield value in accordance with ISO/IEC 19752

\*Drum unit yield value is based on 3 pages per print job.

Individual users will experience different results affected by different printing habits and printing environment.

# EFFICIENT SERIES

EFFICIENT OFFICE SERIES



Product	M7100DN   M7100DW	M7200FD   M7200FDN   M7200FDW														
<b>Print</b>																
Print speed	33ppm(A4)/35ppm(Letter)	33ppm(A4)/35ppm(Letter)														
First print out time	≤8.2s	≤8.2s														
Recommended monthly page volume	750 to 3,500 pages	750 to 3,500 pages														
Max. monthly duty cycle	60,000 pages	60,000 pages														
Printer language	PCL5e, PCL6, PS3, PDF	PCL5e, PCL6, PS3, PDF														
Processor speed	525 MHz	600 MHz														
Memory	128 MB	256 MB														
Control panel	2-line LCD	2-line LCD														
Auto duplex print	Yes	Yes														
NFC function	NO   Yes	No   No   Yes														
<b>Copy</b>																
Copy speed	33cpm(A4)/35cpm(Letter)	33cpm(A4)/35cpm(Letter)														
First copy out time	Flatbed: less than 10s; ADF: less than 11s	Flatbed: less than 10s; ADF: less than 11s														
Max. copy pages	99	99														
Copy reduce/enlarge settings	25%~400%	25%~400%														
<b>Scan</b>																
Scanner type	Flatbed+ADF	Flatbed+ADF														
ADF capacity	50 pages	50 pages														
Scan speed	24ppm(A4)/25ppm(Letter)	24ppm(A4)/25ppm(Letter)														
<b>Fax</b>																
Fax type	-	Mono														
Modem speed	-	33.6Kbps														
Fax memory	-	Up to 650 pages														
<b>Paper Handling</b>																
Paper input capacity	250 pages	250 pages														
Multipurpose tray capacity	1 page	1 page														
Optional input paper tray	-	-														
<b>Others</b>																
Product dimensions (W*D*H)	415*365*350 mm	415*365*350 mm														
Product weight	11.29 kg	11.39kg														
Power consumption	Print average: 550W; Ready: less than 50W; Sleep: less than 2W	Print average: 550W; Ready: less than 50W; Sleep: less than 2W														
Interface	<table border="0"> <tr> <td>Hi-Speed USB 2.0; Net: IEEE 802.3 10/100 Base-Tx</td> <td> <table border="0"> <tr> <td>High-Speed USB 2.0;</td> <td>Ethernet: IEEE 802.3 10/100 Base-Tx;</td> </tr> <tr> <td>Wi-Fi: IEEE 802.11b/g/n</td> <td></td> </tr> </table> </td> </tr> </table>	Hi-Speed USB 2.0; Net: IEEE 802.3 10/100 Base-Tx	<table border="0"> <tr> <td>High-Speed USB 2.0;</td> <td>Ethernet: IEEE 802.3 10/100 Base-Tx;</td> </tr> <tr> <td>Wi-Fi: IEEE 802.11b/g/n</td> <td></td> </tr> </table>	High-Speed USB 2.0;	Ethernet: IEEE 802.3 10/100 Base-Tx;	Wi-Fi: IEEE 802.11b/g/n		<table border="0"> <tr> <td>Hi-speed USB 2.0</td> <td> <table border="0"> <tr> <td>Hi-Speed USB 2.0;</td> <td>Hi-Speed USB 2.0;</td> </tr> <tr> <td>Net: IEEE 802.3 10/100 Base-Tx</td> <td>Net: IEEE 802.3 10/100 Base-Tx;</td> </tr> <tr> <td></td> <td>Wi-Fi: IEEE 802.11b/g/n</td> </tr> </table> </td> </tr> </table>	Hi-speed USB 2.0	<table border="0"> <tr> <td>Hi-Speed USB 2.0;</td> <td>Hi-Speed USB 2.0;</td> </tr> <tr> <td>Net: IEEE 802.3 10/100 Base-Tx</td> <td>Net: IEEE 802.3 10/100 Base-Tx;</td> </tr> <tr> <td></td> <td>Wi-Fi: IEEE 802.11b/g/n</td> </tr> </table>	Hi-Speed USB 2.0;	Hi-Speed USB 2.0;	Net: IEEE 802.3 10/100 Base-Tx	Net: IEEE 802.3 10/100 Base-Tx;		Wi-Fi: IEEE 802.11b/g/n
Hi-Speed USB 2.0; Net: IEEE 802.3 10/100 Base-Tx	<table border="0"> <tr> <td>High-Speed USB 2.0;</td> <td>Ethernet: IEEE 802.3 10/100 Base-Tx;</td> </tr> <tr> <td>Wi-Fi: IEEE 802.11b/g/n</td> <td></td> </tr> </table>	High-Speed USB 2.0;	Ethernet: IEEE 802.3 10/100 Base-Tx;	Wi-Fi: IEEE 802.11b/g/n												
High-Speed USB 2.0;	Ethernet: IEEE 802.3 10/100 Base-Tx;															
Wi-Fi: IEEE 802.11b/g/n																
Hi-speed USB 2.0	<table border="0"> <tr> <td>Hi-Speed USB 2.0;</td> <td>Hi-Speed USB 2.0;</td> </tr> <tr> <td>Net: IEEE 802.3 10/100 Base-Tx</td> <td>Net: IEEE 802.3 10/100 Base-Tx;</td> </tr> <tr> <td></td> <td>Wi-Fi: IEEE 802.11b/g/n</td> </tr> </table>	Hi-Speed USB 2.0;	Hi-Speed USB 2.0;	Net: IEEE 802.3 10/100 Base-Tx	Net: IEEE 802.3 10/100 Base-Tx;		Wi-Fi: IEEE 802.11b/g/n									
Hi-Speed USB 2.0;	Hi-Speed USB 2.0;															
Net: IEEE 802.3 10/100 Base-Tx	Net: IEEE 802.3 10/100 Base-Tx;															
	Wi-Fi: IEEE 802.11b/g/n															
Supplies																
Type	Separate	Separate														
Starter consumable*	Cartridge: 1,500 pages Drum: 12,000 pages	Cartridge: 1,500 pages Drum: 12,000 pages														
Standard consumable*	TL-410: 1,500 pages TL-410H: 3,000 pages TL-410X: 6,000 pages DL-410: 12,000 pages	TL-410: 1,500 pages TL-410H: 3,000 pages TL-410X: 6,000 pages DL-410: 12,000 pages														

\*Approx declared yield value in accordance with ISO/IEC 19752

\*Drum unit yield value is based on 3 pages per print job.

Individual users will experience different results affected by different printing habits and printing environment.



# EFFICIENT SERIES

EFFICIENT OFFICE SERIES

Product	M7310DN   M7310DW	M7300FDN   M7300FDW
<b>Print</b>		
Print speed	33ppm(A4)/35ppm(Letter)	33ppm(A4)/35ppm(Letter)
First print out time	≤8.5s	≤8.5s
Recommended monthly page volume	750 to 3,500 pages	750 to 3,500 pages
Max. monthly duty cycle	60,000 pages	60,000 pages
Printer language	PCL5e, PCL6, PS3, PDF	PCL5e, PCL6, PS3, PDF
Processor speed	800 MHz	600 MHz
Memory	512 MB	512 MB
Control panel	3.5-inch touch screen	3.5-inch touch screen
Auto duplex print	Yes	Yes
NFC function	NO   Yes	NO   Yes
<b>Copy</b>		
Copy speed	33cpm(A4)/35cpm(Letter)	33cpm(A4)/35cpm(Letter)
First copy out time	Flatbed: less than 10s; ADF: less than 11s	Flatbed: less than 10s; ADF: less than 11s
Max. copy pages	99	99
Copy reduce/enlarge settings	25%-400%	25%-400%
<b>Scan</b>		
Scanner type	Flatbed+ADF	Flatbed+ADF
ADF capacity	50 pages	50 pages
Scan speed	24ppm(A4)/25ppm(Letter)	24ppm(A4)/25ppm(Letter)
<b>Fax</b>		
Fax type	-	Mono
Modem speed	-	33.6Kbps
Fax memory	-	Up to 650 pages
<b>Paper Handling</b>		
Paper input capacity	250 pages	250 pages
Multipurpose tray capacity	1 page	1 page
Optional input paper tray	-	-
<b>Others</b>		
Product dimensions (W*D*H)	415*360*352 mm	415*360*352 mm
Product weight	10.54kg	10.54kg
Power consumption	Print average: 550W; Ready: less than 50W; Sleep: less than 2W	Print average: 550W; Ready: less than 50W; Sleep: less than 2W
Interface	Hi-Speed USB 2.0; Net: IEEE 802.3 10/100 Base-Tx   High-Speed USB 2.0; Ethernet: IEEE 802.3 10/100 Base-Tx; Wi-Fi: IEEE 802.11b/g/n	Hi-Speed USB 2.0; Net: IEEE 802.3 10/100 Base-Tx   High-Speed USB 2.0; Ethernet: IEEE 802.3 10/100 Base-Tx; Wi-Fi: IEEE 802.11b/g/n
<b>Supplies</b>		
Type	Separate	Separate
Starter consumable*	Cartridge: 1,500 pages Drum: 12,000 pages	Cartridge: 1,500 pages Drum: 12,000 pages
Standard consumable*	TL-410: 1,500 pages TL-410H: 3,000 pages TL-410X: 6,000 pages TL-410U: 11,000 pages DL-410: 12,000 pages	TL-410: 1,500 pages TL-410H: 3,000 pages TL-410X: 6,000 pages DL-410: 12,000 pages

\*Approx declared yield value in accordance with ISO/IEC 19752

\*Drum unit yield value is based on 3 pages per print job.

Individual users will experience different results affected by different printing habits and printing environment.

# EFFICIENT SERIES

EFFICIENT MAX SERIES



Product	P3305DN	P3305DW
<b>Print</b>		
Print speed	33ppm(A4)/35ppm(Letter)	33ppm(A4)/35ppm(Letter)
First print out time	≤8.2s	≤8.2s
Recommended monthly page volume	1,000 to 10,000 pages	1,000 to 10,000 pages
Max. monthly duty cycle	80,000 pages	80,000 pages
Printer language	PCL5e, PCL6, PS3, PDF	PCL5e, PCL6, PS3, PDF
Processor speed	350 MHz	350 MHz
Memory	256 MB	256 MB
Control panel	2-line LCD	2-line LCD
Auto duplex print	Yes	Yes
NFC function	NO	Yes
<b>Copy</b>		
Copy speed	-	-
First copy out time	-	-
Max. copy pages	-	-
Copy reduce/enlarge settings	-	-
<b>Scan</b>		
Scanner type	-	-
ADF capacity	-	-
Scan speed	-	-
<b>Fax</b>		
Fax type	-	-
Modem speed	-	-
Fax memory	-	-
<b>Paper Handling</b>		
Paper input capacity	250 pages	250 pages
Multipurpose tray capacity	1 page	1 page
Optional input paper tray	-	-
<b>Others</b>		
Product dimensions (W*D*H)	354*334*232 mm	354*334*232 mm
Product weight	6.8kg	6.8kg
Power consumption	Print average: 525W; Standby: 50W; Sleep: Less than 2W	Print average: 525W; Standby: 50W; Sleep: Less than 2W
Interface	Hi-Speed USB 2.0; Net: IEEE 802.3 10/100 Base-Tx	High-Speed USB 2.0; Ethernet: IEEE 802.3 10/100 Base-Tx; Wi-Fi: IEEE 802.11b/g/n
<b>Supplies</b>		
Type	Separate	Separate
Starter consumable*	TL-425H (3,000 pages) DL-425x (25,000 pages)	TL-425H (3,000 pages) DL-425x (25,000 pages)
Standard consumable*	TL-425H (3,000 pages) TL-425X(6,000 pages) TL-425U (11,000 pages) DL-425x (25,000 pages)	TL-425H (3,000 pages) TL-425X(6,000 pages) TL-425U (11,000 pages) DL-425x (25,000 pages)

\*Approx declared yield value in accordance with ISO/IEC 19752

\*Drum unit yield value is based on 3 pages per print job.

Individual users will experience different results affected by different printing habits and printing environment.

# EFFICIENT SERIES

EFFICIENT MAX SERIES



Product	M7105DN	M7105DW
<b>Print</b>		
Print speed	33ppm(A4)/35ppm(Letter)	33ppm(A4)/35ppm(Letter)
First print out time	≤8.2s	≤8.2s
Recommended monthly page volume	1,000 to 10,000 pages	1,000 to 10,000 pages
Max. monthly duty cycle	80,000 pages	80,000 pages
Printer language	PCL5e, PCL6, PS3, PDF	PCL5e, PCL6, PS3, PDF
Processor speed	525 MHz	525 MHz
Memory	256 MB	256 MB
Control panel	2-line LCD	2-line LCD
Auto duplex print	Yes	Yes
NFC function	NO	Yes
<b>Copy</b>		
Copy speed	33cpm(A4)/35cpm(Letter)	33cpm(A4)/35cpm(Letter)
First copy out time	Flatbed: less than 10s; ADF: less than 11s	Flatbed: less than 10s; ADF: less than 11s
Max. copy pages	99	99
Copy reduce/enlarge settings	25%-400%	25%-400%
<b>Scan</b>		
Scanner type	Flatbed+ADF	Flatbed+ADF
ADF capacity	50 pages	50 pages
Scan speed	24ppm(A4)/25ppm(Letter)	24ppm(A4)/25ppm(Letter)
<b>Fax</b>		
Fax type	-	-
Modem speed	-	-
Fax memory	-	-
<b>Paper Handling</b>		
Paper input capacity	250 pages	250 pages
Multipurpose tray capacity	1 page	1 page
Optional input paper tray	-	-
<b>Others</b>		
Product dimension (W*D*H)	415*365*350 mm	415*365*350 mm
Product weight	10.46kg	10.46kg
Power consumption	Print average: 550W; Ready: less than 50W; Sleep: less than 2W	Print average: 550W; Ready: less than 50W; Sleep: less than 2W
Interface	Hi-Speed USB 2.0; Net: IEEE 802.3 10/100 Base-Tx	High-Speed USB 2.0; Ethernet: IEEE 802.3 10/100 Base-Tx; Wi-Fi:IEEE 802.11b/g/n
<b>Supplies</b>		
Type	Separate	Separate
Starter consumable*	TL-425H (3,000 pages) DL-425x (25,000 pages)	TL-425H (3,000 pages) DL-425x (25,000 pages)
Standard consumable*	TL-425H (3,000 pages) TL-425X(6,000 pages) TL-425U (11,000 pages) DL-425x (25,000 pages)	TL-425H (3,000 pages) TL-425X(6,000 pages) TL-425U (11,000 pages) DL-425x (25,000 pages)

\*Approx declared yield value in accordance with ISO/IEC 19752

\*\*Drum unit yield value is based on 3 pages per print job.

Individual users will experience different results affected by different printing habits and printing environment.